

Handelsonderneming Römer & Solar carports

Bezoek op Afspraak  
Vijverweg 4 7641LH Wierden  
Algemeen : 085-0608856

[verkoop@de-energiebespaaradviseur.nl](mailto:verkoop@de-energiebespaaradviseur.nl)

<https://hyxipower-thuisbatterijen.nl/>

Bank NL75 RABO 0315 1786 71  
Btw nr. NL004264151B05  
KvK nr. 87590905



Solarcarports EU

Maatwerk mogelijk

# SOLAR-CARPORTS



- DELIVERY WITHIN EUROPE
- CUSTOMISATION POSSIBLE

## Factory Overview



Established in 2006, with a 10,000m<sup>2</sup> facility and approximately 100 employees in China, we specialized in the production and processing of metal, including steel and aluminium.

At the end of 2008, our production line expanded to include LED luminaires, such as LED ceiling lights, LED downlights, LED floor lights, track lights, etc. Our success extends to many international markets, including Europe, USA, Japan, Southeast Asia.

In 2014, we established a subsidiary in Germany, transforming our business model to ship monthly from our factory in China to warehouses in Germany, and then deliver directly to customers from there. This significantly reduced delivery times.

In 2021, our production line expanded to include solar mounting systems, and we established our new brand - ecosolarcarport. The product range includes mounting systems for roofs, balconies, ground installations, walls, and solar carports.

## In Stock In Germany



## Related Certificates



CE



Statik

(Approved by an architecture authority recognized in Germany)

## Container Quantities - only aluminum carport frame DDU price

### Solarcarports:

Nova - Double Carport 40ft High Cube Container 44 sets per container

Nova - Double Carport 20ft Container 18 sets per container

Nova - Single Carport 40ft High Cube Container 85 sets per container

Nova - Single Carport 20ft Container 33 sets per container

Luxo - Double Carport 40ft High Cube Container 42 sets per container

Luxo - Double Carport 20ft Container 16 sets per container

Luxo - Single Carport 40ft High Cube Container 60 sets per container

Luxo - Single Carport 20ft Container 22 sets per container

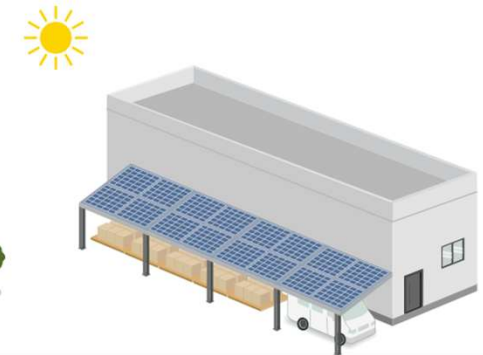
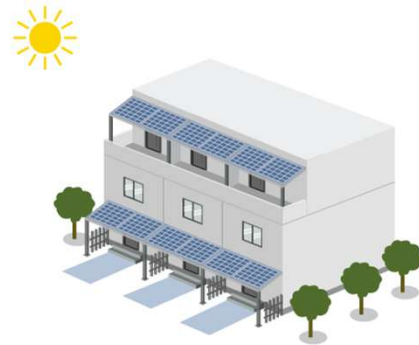
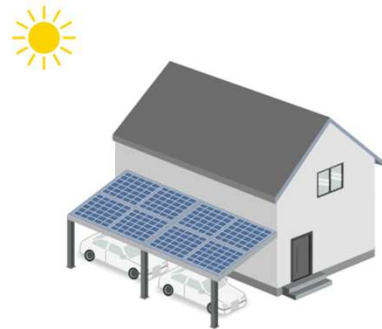
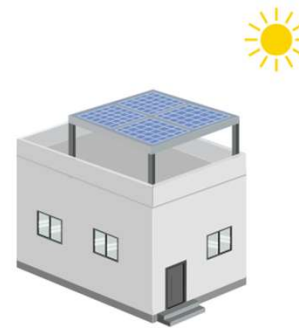
450W Solar Panel 40ft High Cube Container (CIF Rotterdam price to port)

## Solar Energy System

Applicable to a wide range of scenarios

## Customization

The plan can be formulated according to the actual needs of customers.





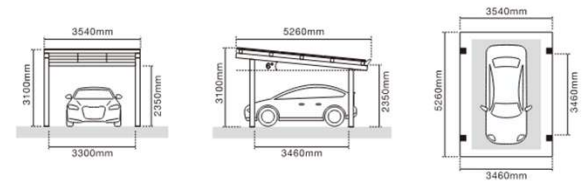
GLASS-GLASS PV MODULE

## Luxo Solar Carport

- ▶ Powder-coated aluminum frame
  - Corrosion resistant, durable, wind resistance
  - No discoloration
  - Easy and quick installation
- ▶ Modular design for easy expansion to more parking spaces
- ▶ Customized sizing available

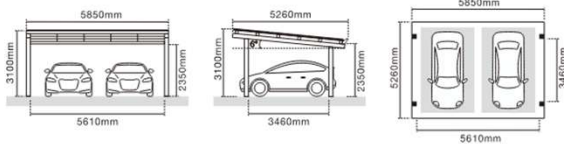
### Luxo Solar Carport

Material: Aluminium  
 Roof pitch: 6°  
 Snow load: 2.5 kN/m<sup>2</sup>  
 Wind load: 33 M/S  
 Module: 9 modules  
 (1722mm x 1134mm x 30mm)  
 Total power 3.96 kWp  
 Color: RAL7016 (Anthracite grey)  
 RAL9004 (black)



## Luxo Solar Carport

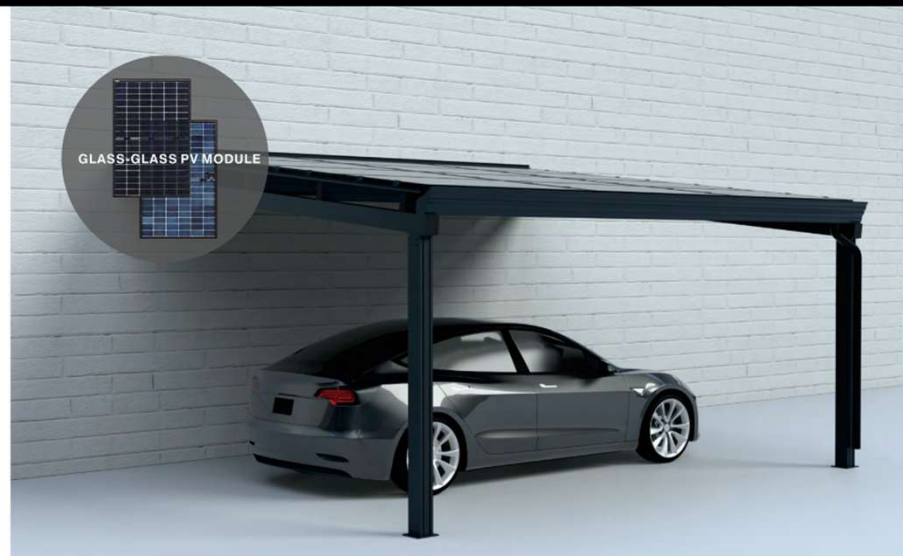
Material: Aluminium  
 Roof pitch: 6°  
 Snow load: 1.1 kN/m<sup>2</sup>  
 Wind load: 33 M/S  
 Module: 15 modules  
 (1722mm x 1134mm x 30mm)  
 Total power 6.60 kWp  
 Color: RAL7016 (Anthracite grey)  
 RAL9004 (black)



Easy Assembly



Water Drainage System

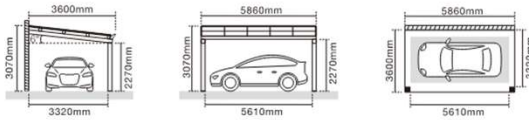


## Column Type Wall Mounted Solar Carport

- ▶ Home Solar Carport Against Wall , where the house and the carport seamlessly merge , becoming integral components of each other
- ▶ This integration strengthens structural stability and enhances aesthetics

## Column Type Wall Mounted Solar Carport

Material: Aluminium  
 Roof pitch: 6°  
 Snow load: 1.1 kN/m<sup>2</sup>  
 Wind load: 33 M/S  
 Module: 10 modules  
 (1722mm x 1134mm x 30mm)  
 Total power 4.40 kWp  
 Color: RAL7016 (Anthracite grey)  
 RAL9004 (black)



Easy Assembly

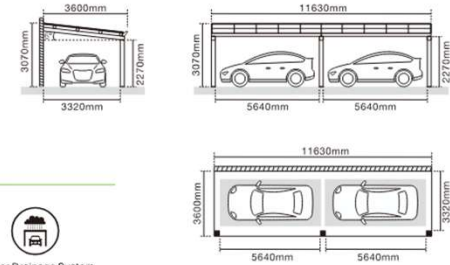


Water Drainage System



## Column Type Wall Mounted Solar Carport

Material: Aluminium  
 Roof pitch: 6°  
 Snow load: 1.1 kN/m<sup>2</sup>  
 Wind load: 33 M/S  
 Module: 20 modules  
 (1722mm x 1134mm x 30mm)  
 Total power 8.80 kWp  
 Color: RAL7016 (Anthracite grey)  
 RAL9004 (black)



Easy Assembly



Water Drainage System





Customized Size

GLASS-GLASS PV MODULE

### Column Type Motorhome Solar Carport

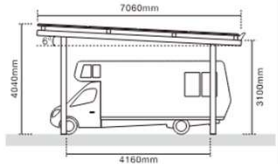
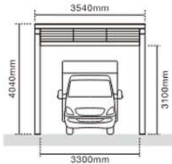
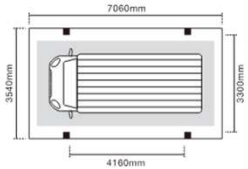
Material: Aluminium  
 Roof pitch: 6°  
 Snow load: 1.5 kN/m<sup>2</sup>  
 Wind load: 33 M/S  
 Module: 12 modules  
 (1722mm x 1134mm x 30mm)  
 Total power 5.28 kWp  
 Color: RAL7016 (Anthracite grey)



Easy Assembly



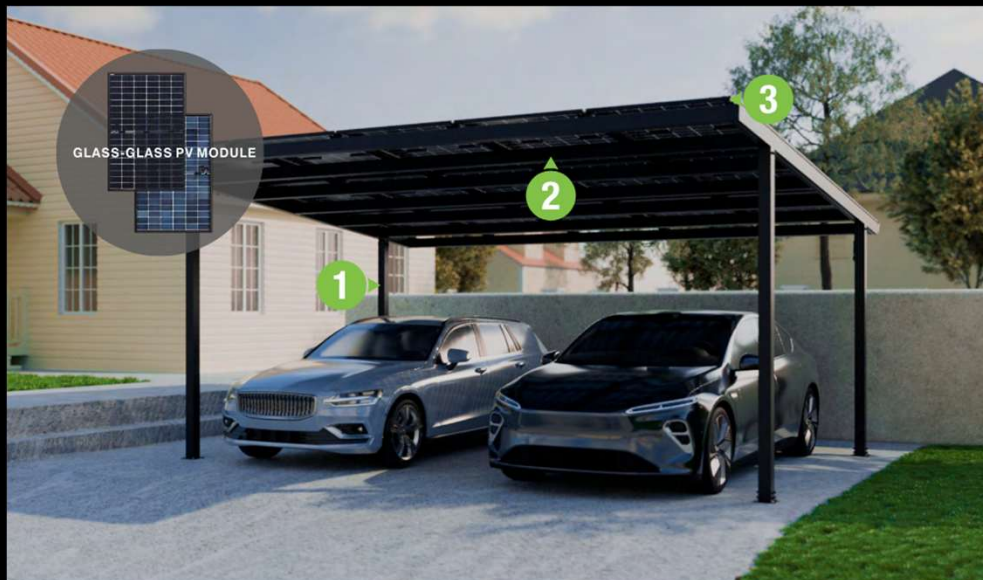
Water Drainage System



## Column Type Motorhome Solar Carport

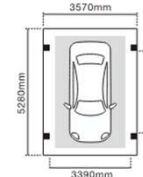
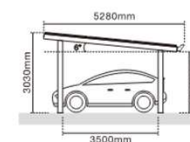
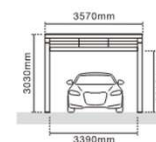
- ▶ Modular design, easy to expand to more parking spaces
- ▶ Powder-coated aluminum frame, corrosion resistant, durable and no discoloration
- ▶ Customized sizing available
- ▶ Easy and quick installation



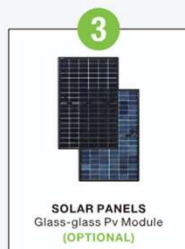


## Nova Solar Carport

Material: Aluminium  
 Roof pitch: 6°  
 Snow load: 1.1 kN/m<sup>2</sup>  
 Wind load: 27.5 M/S  
 Module: 9 modules  
 (1722mm x 1134mm x 30mm)  
 Total power 3.96 kWp  
 Color: RAL7016 (Anthracite grey)

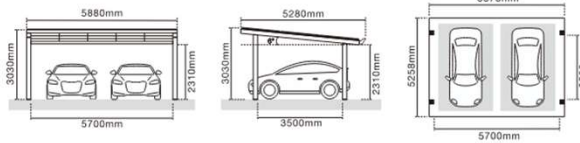


## Nova Solar Carport



## Nova Solar Carport

Material: Aluminium  
 Roof pitch: 6°  
 Snow load: 0.85 kN/m<sup>2</sup>  
 Wind load: 27.5 M/S  
 Module: 15 modules  
 (1722mm x 1134mm x 30mm)  
 Total power 6.60 kWp  
 Color: RAL7016 (Anthracite grey)



Easy Assembly

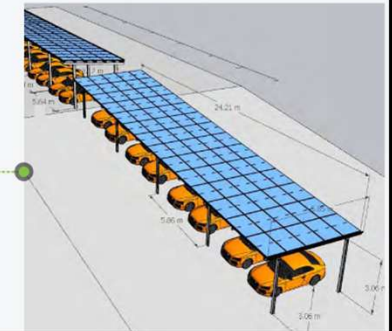
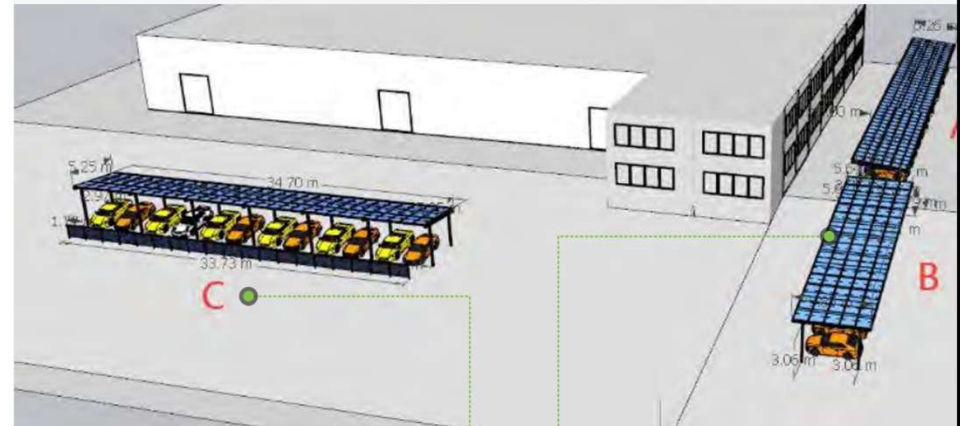


Water Drainage System



## Customization

The plan can be formulated according to the actual needs of customers.



# Reference

## Engineering case

The carport's appearance and structure are designed to perfectly integrate with the surrounding environment, based on the client's specific needs and home layout.



## Reference

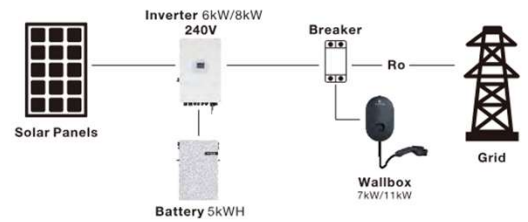
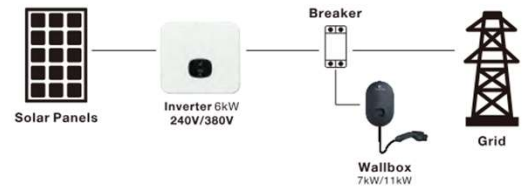
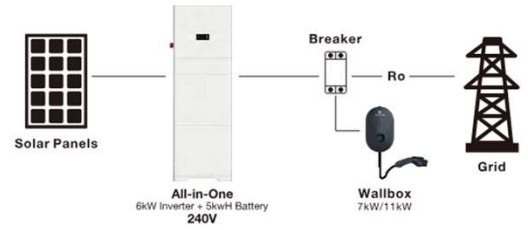




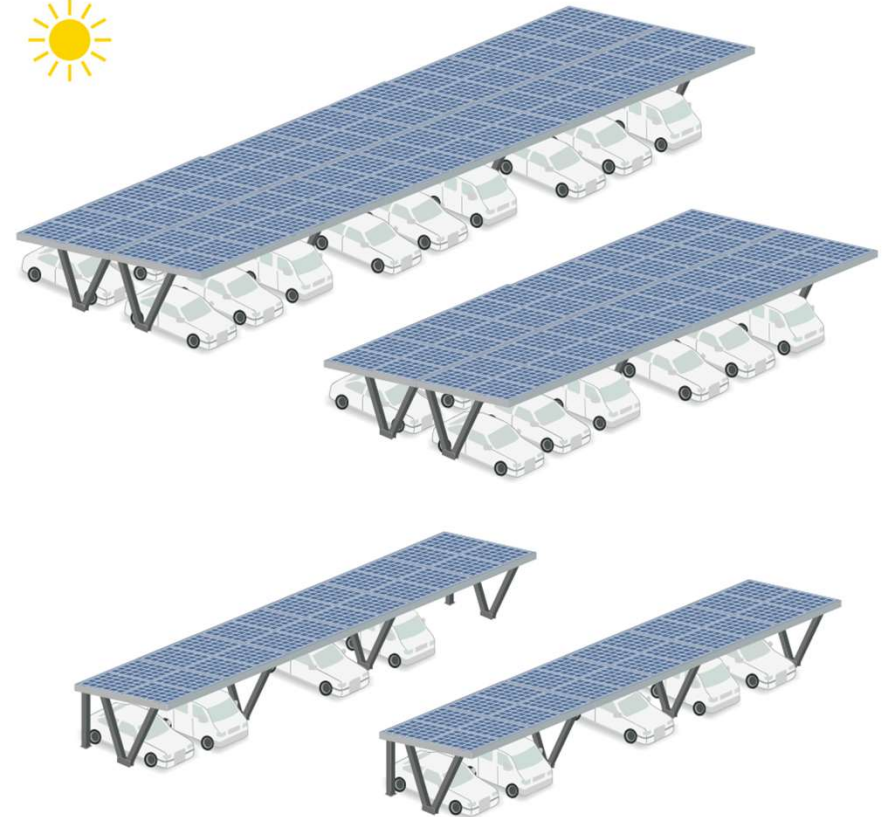
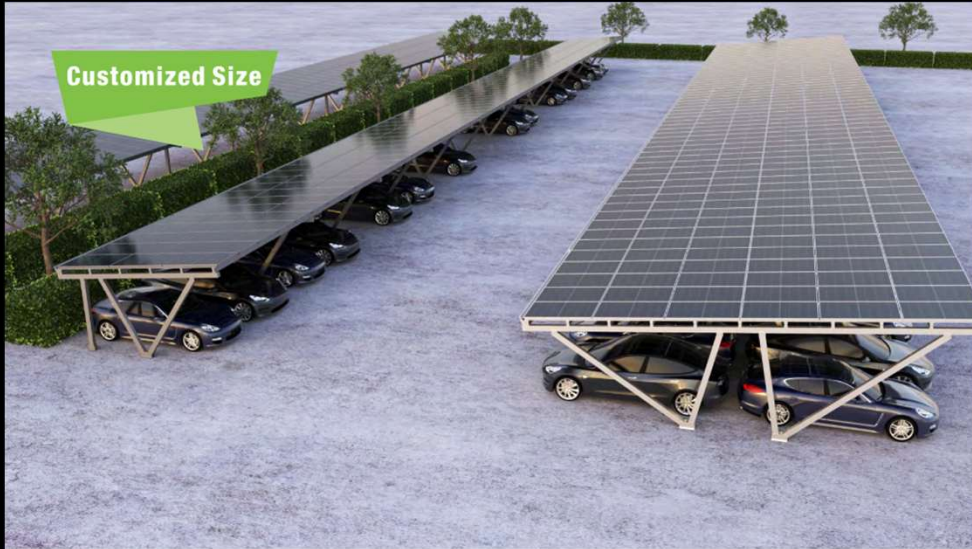
## Solar Carport Complete System Solution

(We can also provide: inverter, battery, solar panel, etc.)

### Solar Carport Complete System Solution



Customized Size



## Commercial Solar Carport

- ▶ Modular design, easily expandable to more parking spaces
- ▶ Easy and quick assembling and installation
- ▶ Tailor-made solution for project
- ▶ Commercial parking lots, increasingly popular in business parks, enabling electric vehicle charging and supplying power to buildings



Easy Assembly



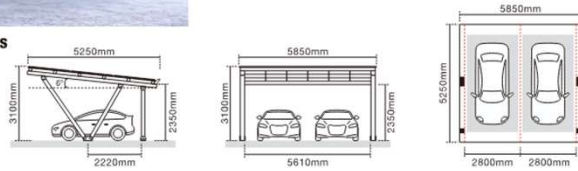
Water Drainage System

## N Type Solar Carport



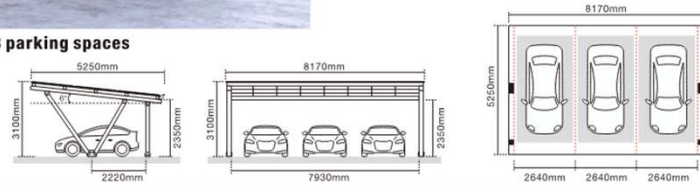
Material: Aluminium  
 Roof pitch: 6°  
 Snow load: 1.1 kN/m<sup>2</sup>  
 Wind load: 33 M/S  
 Module: 15 modules  
 (1722mm x 1134mm x 30mm)  
 Total power 6.6 kWp  
 Color: RAL7016 (Anthracite grey)

A parking lot with 2 parking spaces



Material: Aluminium  
 Roof pitch: 6°  
 Snow load: 1.1 kN/m<sup>2</sup>  
 Wind load: 33 M/S  
 Module: 21 modules  
 (1722mm x 1134mm x 30mm)  
 Total power 9.24 kWp  
 Color: RAL7016 (Anthracite grey)

A parking lot with 3 parking spaces

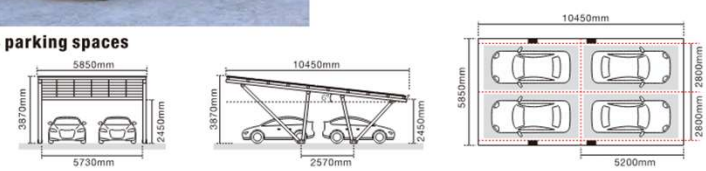


## W Type Solar Carport



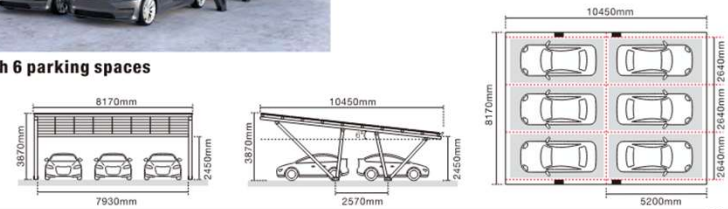
Material: Aluminium  
 Roof pitch: 6°  
 Snow load: 1.1 kN/m<sup>2</sup>  
 Wind load: 33 M/S  
 Module: 30 modules  
 (1722mm x 1134mm x 30mm)  
 Total power 13.20 kWp  
 Color: RAL7016 (Anthracite grey)

A parking lot with 4 parking spaces



Material: Aluminium  
 Roof pitch: 6°  
 Snow load: 1.1 kN/m<sup>2</sup>  
 Wind load: 33 M/S  
 Module: 42 modules  
 (1722mm x 1134mm x 30mm)  
 Total power 18.48 kWp  
 Color: RAL7016 (Anthracite grey)

A parking lot with 6 parking spaces



## | Inverter Residential



### Hybrid Inverter

- HYX-H3K/3K6/4K/4K6/5K/6K/8K/8K-HS
- HYX-H5K/6K/8K/10K/12K-HT
- HYX-H15K/20K/25K-HT



### Microinverter

- HYX-M300/400/500-S(SW)
- HYX-M600/700/800/900/1000-S(SW)
- HYX-M1600/1800/2000-S(SW)



### Single-phase Inverter Series

- HYX-S3K/3K6/4K/4K6/5K/6K-S
- HYX-S7K/8K/9K/10K/12K-S



### Three-phase Inverter Series

- HYX-S8K/10K/12K-T
- HYX-S15K/17K/20K/25K-T

## C&I



### Three-phase Inverter Series

- HYX-S30K/33K/36K/40K/50K-T
- HYX-S100K/110K/120K-T

## Utility



- HYX-S320K-HT

## | ESS Residential



### High Voltage Battery

- HYX-E50/100/150/200-H
- HYX-E50/100/150/200/250/300/400/500-H2



### All-in-one

- HYX-H6/9/12/15K-HTA
- HYX-H5.7/7.6/11.5K-HTA



### AC Battery

- HYX-H6/9/12/15K-HTAC
- HYX-H5.7/7.6/11.5K-HTAC



### Portable Power Station

- HYX-EA700/1000



- HYX-EA2000/2500

## C&I



### All-in-one Liquid Cooling ESS

- HYX-EL23P2-GI
- HYX-EL23P2-GI



### Liquid Cooling ESS

- HYX-EL37P2-DC
- HYX-EL41P2-DC

## Utility



### Container ESS

- HYX-EL3000/4000/5000P2-DC

## | Accessory



### DCS

- HYX-DCS-4G
- HYX-DCS-WL



### DMU

- HYX-DMU-4G
- HYX-DMU-W



### Smart PV Optimizer

- HYX-OP400/500/600/700
- HYX-OP1100/1300



### HYXi Logger

- HYXiLogger

## | Smart Energy Platform



### Smart Energy Platform

- [www.hyxicloud.com](http://www.hyxicloud.com)

\*HYXIPOWER is continuously expanding our product footprint. Please contact your local representative to inquire about available products in your country.

# VDS-S108/M10N-BG



## ELECTRICAL DATA (STC)

Peak Power $P_{max}$ (Wp)*	415	420	425	430	435	440
Maximum Power Voltage $V_{mp}$ (V)	31.9	32.1	32.3	32.5	32.7	32.9
Maximum Power Current $I_{mp}$ (A)	13.01	13.09	13.16	13.24	13.31	13.38
Open Circuit Voltage $V_{oc}$ (V)	38.5	38.7	38.9	39.1	39.3	39.5
Short Circuit Current $I_{sc}$ (A)	13.72	13.81	13.91	14.01	14.10	14.19
Module Efficiency $\eta_m$ (%)	21.2	21.5	21.7	22.0	22.3	22.5

Power Tolerance  $P_{max}$  (W) 0<sup>+</sup>±5  
 STC: Irradiance 1000W/m<sup>2</sup>, module temperature 25°C, AM=1.5, \*Measuring tolerance: ±3%

## ELECTRICAL DATA(BNPI)

Peak Power $P_{max}$ (Wp)*	440	445	450	455	460	465
Maximum Power Voltage $V_{mp}$ (V)	31.9	32.1	32.3	32.5	32.7	32.9
Maximum Power Current $I_{mp}$ (A)	13.79	13.86	13.93	14.00	14.07	14.14
Open Circuit Voltage $V_{oc}$ (V)	38.5	38.7	38.9	39.1	39.3	39.5
Short Circuit Current $I_{sc}$ (A)	14.47	14.56	14.64	14.73	14.82	14.91

BNPI: Irradiance 1000W/m<sup>2</sup>, module temperature 25°C

## ELECTRICAL DATA (NMOT)

Maximum Power $P_{max}$ (Wp)*	317	321	325	329	333	337
Maximum Power Voltage $V_{mp}$ (V)	30.0	30.2	30.4	30.6	30.8	31.0
Maximum Power Current $I_{mp}$ (A)	10.57	10.63	10.70	10.76	10.82	10.88
Open Circuit Voltage $V_{oc}$ (V)	36.4	36.6	36.8	37.0	37.2	37.4
Short Circuit Current $I_{sc}$ (A)	11.10	11.18	11.25	11.33	11.41	11.48

NMOT: Irradiance 800W/m<sup>2</sup>, module temperature 20°C, AM=1.5, wind speed 1m/s

## MECHANICAL DATA

Solar Cells	N-Type TOPCon Monocrystalline silicon
Cell Orientation	108 cells (6 x 18)
Module Dimensions	1724x1134x30 mm
Weight	25.1 kg
Front Glass	2.0 mm tempered glass
Encapsulant Material	PDE/EVA
Back Glass	2.0 mm semi-tempered glass
Frame	30 mm Anodized Aluminium Alloy (Silver/Black Frame optional)
Junction Box	IP 68 rated
Cables	Photovoltaic Technology Cable 4.0 mm <sup>2</sup> Cable length 350 mm or customized length

\*Please refer to regional datasheet for specified connector.

## TEMPERATURE RATINGS

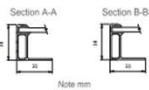
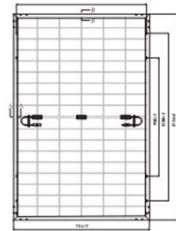
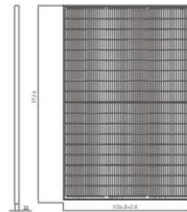
NMOT (Nominal Module Operating Temperature)	42°C (±2°C)
Temperature Coefficient of $P_{max}$	-0.29%/°C
Temperature Coefficient of $V_{oc}$	-0.25%/°C
Temperature Coefficient of $I_{sc}$	0.046%/°C

(Do not connect Fuse in Combiner Box with two or more strings in parallel connection)

## MAXIMUM RATINGS

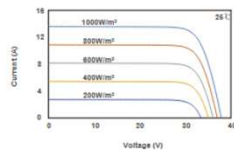
## PACKAGING CONFIGURATION

## DIMENSIONS OF PV MODULE (mm)



## I-V CURVE

Current-Voltage & Power-Voltage Curve (430)



VDS-S108/M10N-BG

# 415-440W

182 mm Half Cell, 108 Cells

TOPCon Bifacial Solar Module, Full Black

Status: 06/2025

**22.5%**  
Module Efficiency

**440W**  
Highest Power Output

**15 YEARS**  
Product Warranty

**30 YEARS**  
Linear Power Warranty

1.00% First year power degradation

0.40% Annual degradation

## PRODUCT ADVANTAGES

- High module conversion efficiency**  
Module efficiency up to 22.5% achieved through advanced cell technology and manufacturing process
- Lower operating temperature**  
Lower operating temperature and temperature coefficient increase the power output
- Excellent weak light performance**  
More power output in weak light condition, such as cloudy, morning and sunset
- Extended wind and snow load tests**  
Module certified to withstand extreme wind(2400 Pascal) and snow loads(5400 Pascal)
- IP68 junction box**  
High waterproof & dustproof level

## PERFORMANCE WARRANTY

